

FD ECO 006

MICHELIN DEPOT



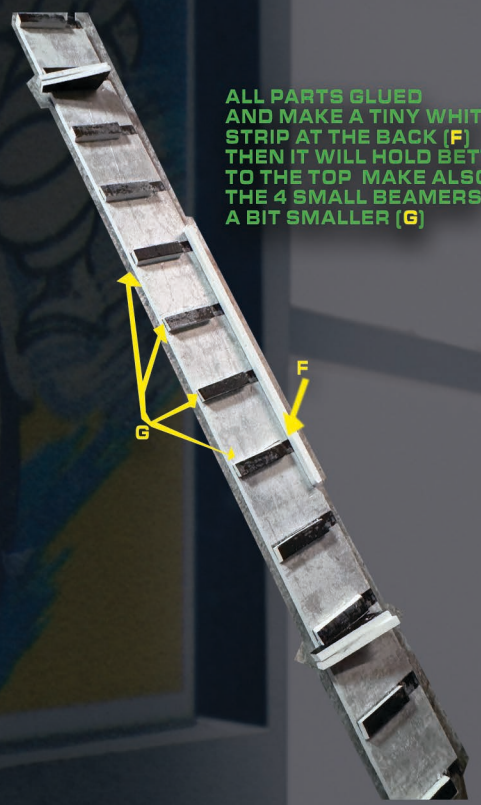
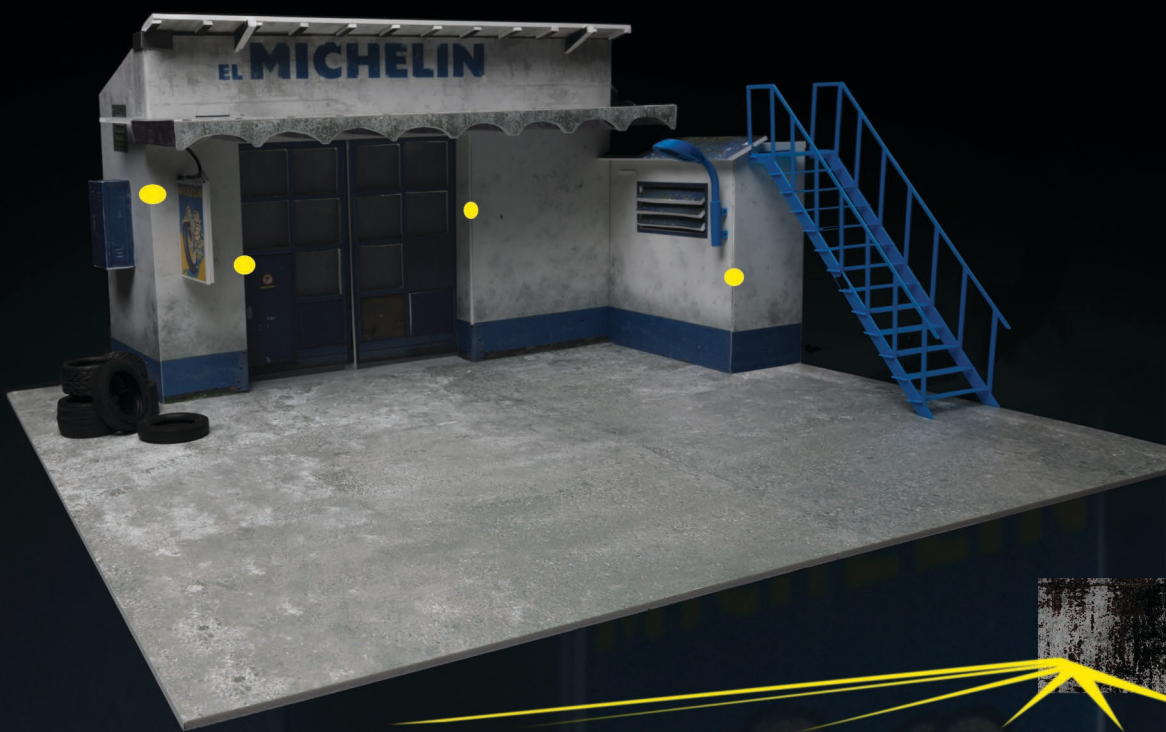
911 DIORAMA™

MANUAL / HANDLEIDING / GEBRAUCHSANLEITUNG
MANUEL DE CONSTRUCTION

STEP ONE : CUT ALL THE PARTS

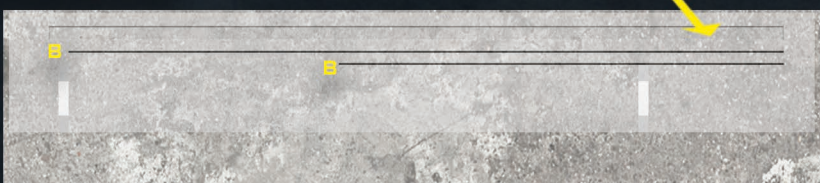
TO GET A BETTER CONNECTION TO EACH PART TRY TO MAKE A 45 DEGREES CUT

YELLOW DOTS MARK THE 45 DEGREES CUTS ●



ALL PARTS GLUED AND MAKE A TINY WHITE STRIP AT THE BACK (F) THEN IT WILL HOLD BETTER TO THE TOP MAKE ALSO THE 4 SMALL BEAMERS A BIT SMALLER (G)

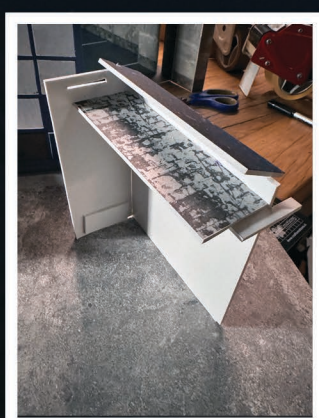
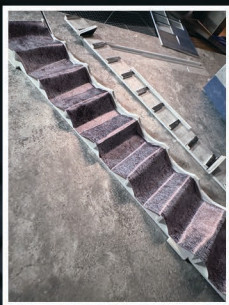
FLOOR INSTRUCTION



- A GLUE GREY LONG STRIP ON FLOOR POSITION
 - B MAKE 2 CUTS IN THE FLOOR
 - C FABRICATE 2 PLASTIC STRIPS 1 x 6 MM x 13.5 CM AND 1 x 6 MM x 21 CM TO PUSH INTO THE 2 CUTS IN THE FLOOR
- DO THE SAME FOR THE UPPER HALF SECTION
THEN YOU HAVE CREATED THE SLIDERS FOR THE 2 DOORS



CUT AL THE GREY PARTS (D) AND USE THE ARCHER SECTION AS GUIDE WHEN ALL PARTS ARE GLUED THEN USE THE GREY 2 PART STICKER TO MAKE A ARCHED CEILING (E)



OUTSIDE SMALL SECTION LEFT

INSIDE SMALL SECTION LEFT

ALL IN ALL NOT TO COMPLICATED AND IF YOU HAVE ANY QUESTIONS , DONT HESITATE TO WHATSAPP US BUTTONS PROVIDED ON OUR WEBSITE