

# FD ECO 011

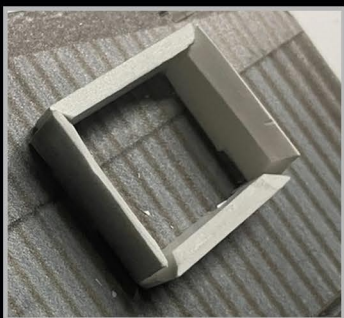
## RWB HQ



MANUAL / HANDLEIDING / GEBRAUCHSANLEITUNG  
 MANUEL DE CONSTRUCTION

### STEP ONE : CUT ALL THE PARTS

TO GET A BETTER CONNECTION TO EACH PART TRY TO MAKE A 45 DEGREES CUT



### STEP 2

AFTER YOU CAREFULLY CUT ALL THE PIECES YOU CAN START WITH THE WINDOWS

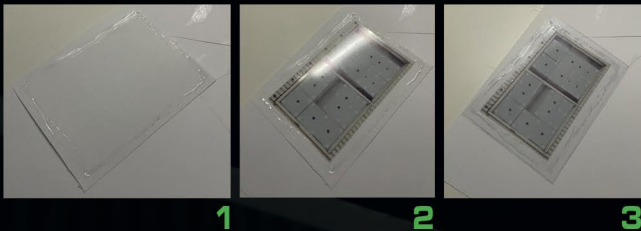
ONE SECTION YOU DONT CUT IS THE LEFT STORAGE UNITS, LEAVE ALL IN ONE PIECE AND CHECK OUT THE YOUTUBE VIDEO HOW TO BUILD UP !!

### STEP 3

PREPARE THE WINDOWS PROVIDED

- 1 WHITE PAPER
- 2 THEN PRINTED COLOR WINDOW
- 3 ON TOP THE PLASTIC SHEET

LOOK BELOW FOR DETAILS



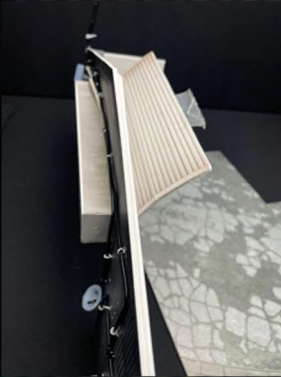
### STEP 4

AFTER CUTTING THE WALL PIECES 45 DEGREES YOU WILL SEE ONE HALF IS LONGER THAN THE OTHER SO SHORT SIDE ON THE PLATE LONGER ON THE BOTTOM RIGHT



### STEP 5

IN FACT CUT THE DOOR AND SLICE EVERY SECOND SECTION THEN YOU WILL GET A FLEXIBLE DOOR AND CAN USE IT WITH THE PROVIDED SLIDERS TO A FULL WORKING ONE



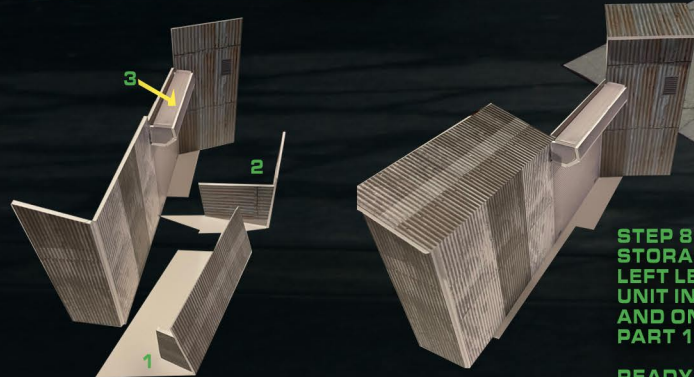
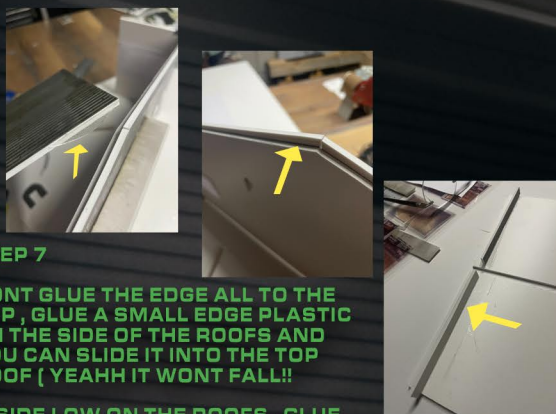
### STEP 6

NOW COMES THE CHALLENGE MEASURE ALL THE WIRES YOU HAVE 1,5 METER TO CUT AND ATTACH THEM WITH THE WHITE THINNER WIRES, JUST FOLLOW THE BOARD AND YOU GET IT THE THICKER SMALL WHITE IS FOR THE CAMERA WHEN DONE YOUR 80% FROM FINAL END RESULT

### STEP 7

DONT GLUE THE EDGE ALL TO THE TOP, GLUE A SMALL EDGE PLASTIC ON THE SIDE OF THE ROOFS AND YOU CAN SLIDE IT INTO THE TOP ROOF (YEAHH IT WONT FALL!!)

INSIDE LOW ON THE ROOFS, GLUE AN STROKE FOREX !!



STEP 8 STORAGE SECTION LEFT LEAVE THE UNIT IN ONE PIECE AND ONLY GLUE PART 1 / 2 / 3  
 READY



1 OR 2 ENDWIRES FROM THE BUILDING LEAD UP, TAKE THE ADVANTAGE TO ATTACH THE PROVIDED POLE

LEAVE A SMALL PIECE FOR THE AIR VENT RIGHT NEXT TO THE DOOR YOU CAN USE THE BLACK STICKER STROKE TO WRAP THE VENT AS ISOLATION

ALL IN ALL ITS A VERY LOVELY JOB TO MAKE THIS DIORAMA HOPE YOU ENJOY AND STAY TUNED FOR MORE AMAZING DIORAMAS IN THE NEAR FUTURE

ANY QUESTIONS OR SUGGESTIONS YOU CAN ALWAYS MAIL US AT

FLIPDIORAMA@GMAIL.COM

EY OBVIOUS ;)

